



**BOSCH**

Invented for life



# STANLEY MARTIN CUSTOM HOMES PROJECT

FEATURING BOSCH AND THERMADOR APPLIANCES



Bosch in every detail.



At Bosch, we make kitchen appliances that are invented for life. With an enduring commitment to quality and design, our products leave you free to savor all of life's joyous moments.



LUXURY APPLIANCES, REDEFINED.

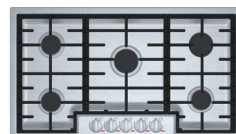


The newly redesigned Masterpiece® and Professional Collections tell two distinct product and design stories while providing every necessary ingredient required for artful entertaining. Experience unparalleled performance and leading innovations across cooling, cooking, and dish care—now featuring smart kitchen appliances enabled with Home Connect™.

Elevate Your Cooking, without Compromising Your Style.



## Bosch 300 Series Package



**NGM5656UC**

**500 Series 36" Gas Cooktop**

- ▶ OptiSim® burner - simmer delicate sauces and melt chocolate without scorching.
- ▶ Electronic re-ignition will automatically re-ignite the burner in case the flame goes out.
- ▶ Seamless, one-piece stainless steel design makes clean-up simple.
- ▶ Continuous grates make moving heavy pots easier.



**HCP36E52UC**

**300 Series 36" Wall Hood**

- ▶ Quiet operation 1.5 sones / 168 CFM low to 5.3 sones / 300 CFM high.
- ▶ ENERGY STAR® certified, efficient 300 CFM chimney wall hood.
- ▶ Three speed touch controls with LCD display.
- ▶ Dishwasher safe aluminum mesh filters.
- ▶ Converts to recirculation mode with accessory kit (separate purchase required).



**HBL57M52UC**

**500 Series 30" Microwave Combination Oven**

- ▶ Genuine European convection for even baking results on multiple racks.
- ▶ Heavy-duty metal knobs offer a premium European feel.
- ▶ The wall oven is designed to be installed flush with your cabinetry.



**B20CS30SNS**

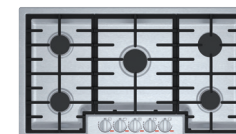
**500 Series 30" Microwave Combination Oven**

- ▶ Anti-fingerprint stainless steel resists smudges and cleans easily.
- ▶ MultiAirFlow™ cooling system boosts air circulation for even temperature throughout.
- ▶ ENERGY STAR® qualified for energy efficiency.
- ▶ LED lighting and transparent storage provide ideal visibility throughout.
- ▶ Dispenses fresh-tasting filtered water, crushed ice and cubed ice.



**Bosch dishwasher not currently available**

## Bosch 500 Series Package



**NGM5656UC**

**500 Series 36" Gas Cooktop**

- ▶ OptiSim® burner - simmer delicate sauces and melt chocolate without scorching.
- ▶ Electronic re-ignition will automatically re-ignite the burner in case the flame goes out.
- ▶ Seamless, one-piece stainless steel design makes clean-up simple.
- ▶ Continuous grates make moving heavy pots easier.



**HCBS6651UC**

**500 Series 36" Wall Hood**

- ▶ Quiet blower 4.6 sones / 178 CFM low to 9.9 sones / 600 CFM high.
- ▶ 600 CFM centrifugal integrated blower included.
- ▶ Four speed touch controls with LCD display.
- ▶ Dishwasher safe filters with stainless steel covers.



**HBL5551UC**

**500 Series 30" Double Wall Oven**

- ▶ Heavy-duty metal knobs offer a premium European feel.
- ▶ The double oven is designed to be installed flush with your cabinetry.
- ▶ Bosch double ovens are compatible with most competitors' cutouts.



**HMD8451UC**

**800 Series 24" Drawer Microwave**

- ▶ Convenient automatic sensor programs simplify cooking for great results every time.
- ▶ Low profile design with touch "open" and "close".
- ▶ Room enough to fit a 4 qt. casserole dish.
- ▶ Install under a counter or below a wall oven.



**B36CT80SNS**

**800 Series French Door Bottom Mount Refrigerator**

- ▶ The revolutionary FarmFresh System™ combines four technologies designed to keep food fresher longer.
- ▶ VitaFreshPro™ offers preset settings that automatically balance BOTH temperature and humidity.
- ▶ Dual compressors and evaporators offer precise cooling and humidity control, while reducing odor transfer.
- ▶ Keep your kitchen looking beautiful with an easy to clean stainless steel exterior.
- ▶ With Home Connect™, remotely control and monitor your appliance to efficiently manage your day.



**Bosch dishwasher not currently available**

## Thermador Base Package



**PRG366WH**

**36-Inch Pro Harmony® Standard Depth Gas Range**

- ▶ OptiSim® burner - simmer delicate sauces and melt chocolate without scorching.
- ▶ Electronic re-ignition will automatically re-ignite the burner in case the flame goes out.
- ▶ Seamless, one-piece stainless steel design makes clean-up simple.
- ▶ Continuous grates make moving heavy pots easier.



**HMCB36WS**

**36-Inch Masterpiece® Pyramid Chimney Wall Hood with 600 CFM**

- ▶ Quiet operation 1.5 sones / 168 CFM low to 5.3 sones / 300 CFM high.
- ▶ ENERGY STAR® certified, efficient 300 CFM chimney wall hood.
- ▶ Three speed touch controls with LCD display.
- ▶ Dishwasher safe aluminum mesh filters.
- ▶ Converts to recirculation mode with accessory kit (separate purchase required).



**MEM301WS**

**30-Inch Masterpiece® Combination Wall Oven**

- ▶ Genuine European convection for even baking results on multiple racks.
- ▶ Heavy-duty metal knobs offer a premium European feel.
- ▶ The wall oven is designed to be installed flush with your cabinetry.



**B36CT81SNS**

**Bosch 800 Series French Door Bottom Mount Refrigerator**

- ▶ Anti-fingerprint stainless steel resists smudges and cleans easily.
- ▶ MultiAirFlow™ cooling system boosts air circulation for even temperature throughout.
- ▶ ENERGY STAR® qualified for energy efficiency.
- ▶ LED lighting and transparent storage provide ideal visibility throughout.
- ▶ Dispenses fresh-tasting filtered water, crushed ice and cubed ice.



**DWHD650WFM**

**24-Inch Masterpiece® Stainless Steel Emerald® Dishwasher**

- ▶ 44 dBA: Quietest Dishwasher Brand in the U.S.
- ▶ A 3rd rack adds versatility and offers 30% more loading capacity.
- ▶ FlexSpace™ Tines fold back to fit your larger pots & pans.
- ▶ RackMatic® offers 3 height levels, for 9 possible rack positions.
- ▶ Speed60® gets your dishes from dirty to dry in about an hour.

## Thermador 1<sup>st</sup> Upgrade Package



**PRD486WDGU**

**48-Inch Pro Grand® Commercial Depth Dual Fuel Range**

- ▶ The perfect blend of professional grade cooking with a New Contemporary Design that will fit seamlessly into any Kitchen style with a color TFT interface for a full range of cooking functions.
- ▶ The Star Burner deliver superior flame spread for more even heating.
- ▶ 4 ExtraLow® burners for simmering, melting, or holding long durations.
- ▶ Non-stick griddle with even heating across the entire surface.
- ▶ Enabled with Home Connect – enjoy Personalized Control, Helpful Notifications & Remote Diagnostics.



**HPCN48WS**

**48-Inch Professional Chimney Wall Hood**

- ▶ Crafted to complete the ultimate cooking system with Thermador ranges.
- ▶ Powerfully Quiet® blower system accepts integral, inline, and remote.
- ▶ Dishwasher safe stainless steel baffle filters.
- ▶ Features automatic mode, delay shut-off, and check filter light.
- ▶ Beautiful illumination with multi-level, vivid LED lights.



**VT11010W**

**1000 CFM Inline Blower**

- ▶ 1000 CFM inline blower can be mounted along the duct line anywhere between the kitchen and the exterior wall.



**MD24WS**

**24-Inch Built-in MicroDrawer® Microwave**

- ▶ Large Capacity - a spacious 1.2 cu. ft. interior fits a 20 oz. cup or 13" x 9" pan.
- ▶ Flush Installation - achieve a perfectly flush installation in any standard depth cabinetry.
- ▶ Sensor Cooking - our MicroDrawer® includes a special sensor mode that controls humidity and automatically adjusts cooking level and time.
- ▶ 10 Cooking Modes - modes that include melt, warm and soften.
- ▶ Touch "Open" and "Close" - eliminates the need for a handle.



**DWHD660WFP**

**24-Inch Professional Stainless Steel Topaz® Dishwasher**

- ▶ Enabled with Home Connect – enjoy Personalized Control, Helpful Notifications & Remote Diagnostics.
- ▶ Chef's Tool Drawer (3rd Rack) is designed to make loading and unloading tools and hard to place items extraordinarily easier.
- ▶ Time remaining PowerBeam® shines the actual remaining time of the cycle on the floor.
- ▶ Flexible folding tines fold down to accommodate larger pots, pans, and dishes and add flexibility to hold items twice as wide as previous models and significantly wider than competitor.



**T30IR901SP**

**30-Inch Built-In Panel Ready Fresh Food Column**

- ▶ Delicate Produce Bins provides expanded storage and protects sensitive fruits and vegetables.
- ▶ LED Lighting illuminates and provides visibility to stored contents.
- ▶ New All-Leg Leveling can save professionals up to 30 minutes on installation.
- ▶ Quick Chill.
- ▶ SoftClose® door hinges enable ultra-smooth closing.



**T18IF900SP**

**18-Inch Built-In Panel Ready Freezer Column**

- ▶ Diamond Ice made with twist tray technology provides unique shaped ice.
- ▶ Filtered automatic ice maker.
- ▶ Cool Air Flow technology evenly distributes cold air throughout all parts of the unit.
- ▶ New All-Leg Leveling can save professionals up to 30 minutes on installation.
- ▶ SoftClose® door hinges enable ultra-smooth closing.

## Thermador 2<sup>nd</sup> Upgrade Package



**PRD486WDGU**

**48-Inch Pro Grand® Commercial Depth Dual Fuel Steam Range**

- ▶ The perfect blend of professional grade cooking with a New Contemporary Design that will fit seamlessly into any kitchen style with a color TFT interface for a full range of cooking functions.
- ▶ 27 Easy Cook® food programs. Pre-programmed modes automatically set the oven temperature and humidity to ensure perfect cooking results.
- ▶ Non-stick griddle with even heating across the entire surface.
- ▶ Warming drawer can hold and warm 10 dinner plates with 3 temp settings.
- ▶ Enabled with Home Connect – enjoy Personalized Control, Helpful Notifications & Remote Diagnostics.



**HPCN48WS**

**48-Inch Professional Chimney Wall Hood**

- ▶ Crafted to complete the ultimate cooking system with Thermador ranges.
- ▶ Powerfully Quiet® blower system accepts integral, inline, and remote.
- ▶ Dishwasher safe stainless steel baffle filters.
- ▶ Features automatic mode, delay shut-off, and check filter light.
- ▶ Beautiful illumination with multi-level, vivid LED lights.



**VT11010W**

**1000 CFM Inline Blower**

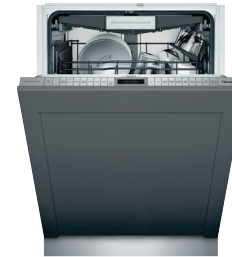
- ▶ 1000 CFM inline blower can be mounted along the duct line anywhere between the kitchen and the exterior wall.



**MD24WS**

**24-Inch Built-in MicroDrawer® Microwave**

- ▶ Large Capacity - a spacious 1.2 cu. ft. interior fits a 20 oz. cup or 13" x 9" pan.
- ▶ Flush Installation - achieve a perfectly flush installation in any standard depth cabinetry.
- ▶ Sensor Cooking - our MicroDrawer® includes a special sensor mode that controls humidity and automatically adjusts cooking level and time.
- ▶ 10 Cooking Modes - modes that include melt, warm and soften.
- ▶ Touch "Open" and "Close" - eliminates the need for a handle.



**DWHD770WPR**

**24-Inch Custom Panel Sapphire® Dishwasher**

- ▶ Enabled with Home Connect – enjoy Personalized Control, Helpful Notifications & Remote Diagnostics.
- ▶ StarDry™ - The most exceptional drying power in the world. Introducing Thermador's Zeolite technology, reducing the need to towel dry items. No other dishwasher dries better.
- ▶ Push to Open dishwasher opens with either a push or pull, so loading is easier, even when your hands are full.
- ▶ Sapphire Glow internal light illuminates glassware.
- ▶ Adjustable Chef's Tool Drawer® delivers added loading capacity as well as flexibility to accommodate larger or smaller items, wider ends and utensil handles.



**T30IR901SP**

**30-Inch Built-In Panel Ready Fresh Food Column**

- ▶ Delicate Produce Bins provides expanded storage and protects sensitive fruits and vegetables.
- ▶ LED Lighting illuminates and provides visibility to stored contents.
- ▶ New All-Leg Leveling can save professionals up to 30 minutes on installation.
- ▶ Quick Chill.
- ▶ SoftClose® door hinges enable ultra-smooth closing.



**T18IF900SP**

**18-Inch Built-In Panel Ready Freezer Column**

- ▶ Diamond Ice made with twist tray technology provides unique shaped ice.
- ▶ Filtered automatic ice maker.
- ▶ Cool Air Flow technology evenly distributes cold air throughout all parts of the unit.
- ▶ New All-Leg Leveling can save professionals up to 30 minutes on installation.
- ▶ SoftClose® door hinges enable ultra-smooth closing.

# STANLEY MARTIN CUSTOM HOMES



**BOSCH**

Invented for life

1.800.944.2904

[www.bosch-home.com/us](http://www.bosch-home.com/us)

***Thermador*** 

1.800.735.4328

[thermador.com](http://thermador.com)

Kitchen designs shown within this brochure are inspirational in nature, highlighting featured products within available packages. They are not representative of this specific building project.

©2020 BSH Home Appliances Corporation

All rights reserved. Bosch is a registered trademark of Robert Bosch GmbH.

All information presented herein is based on data available at the time of printing and is subject to change without notice.

20-MULTI-0154 2/20